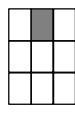
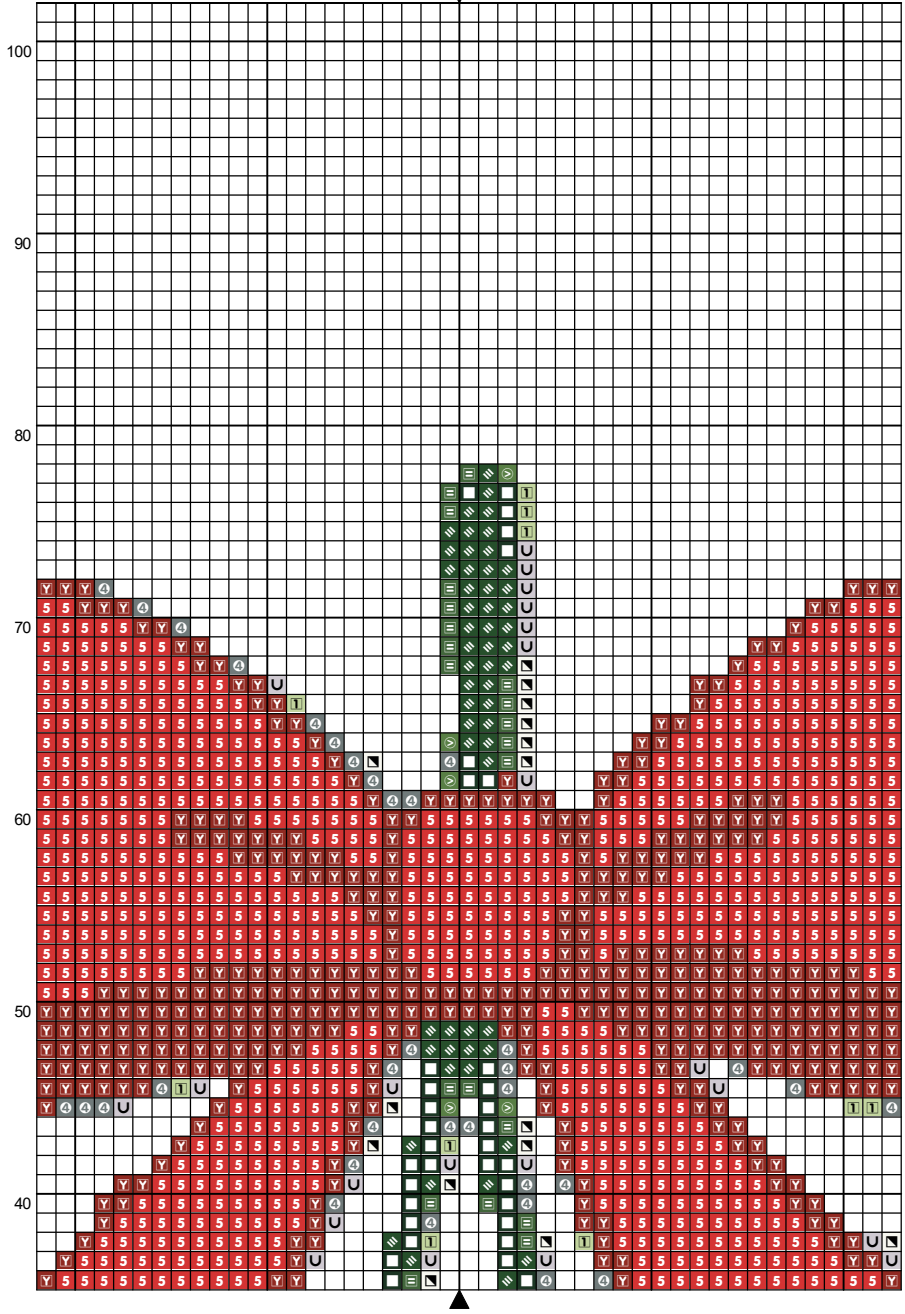
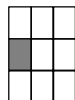
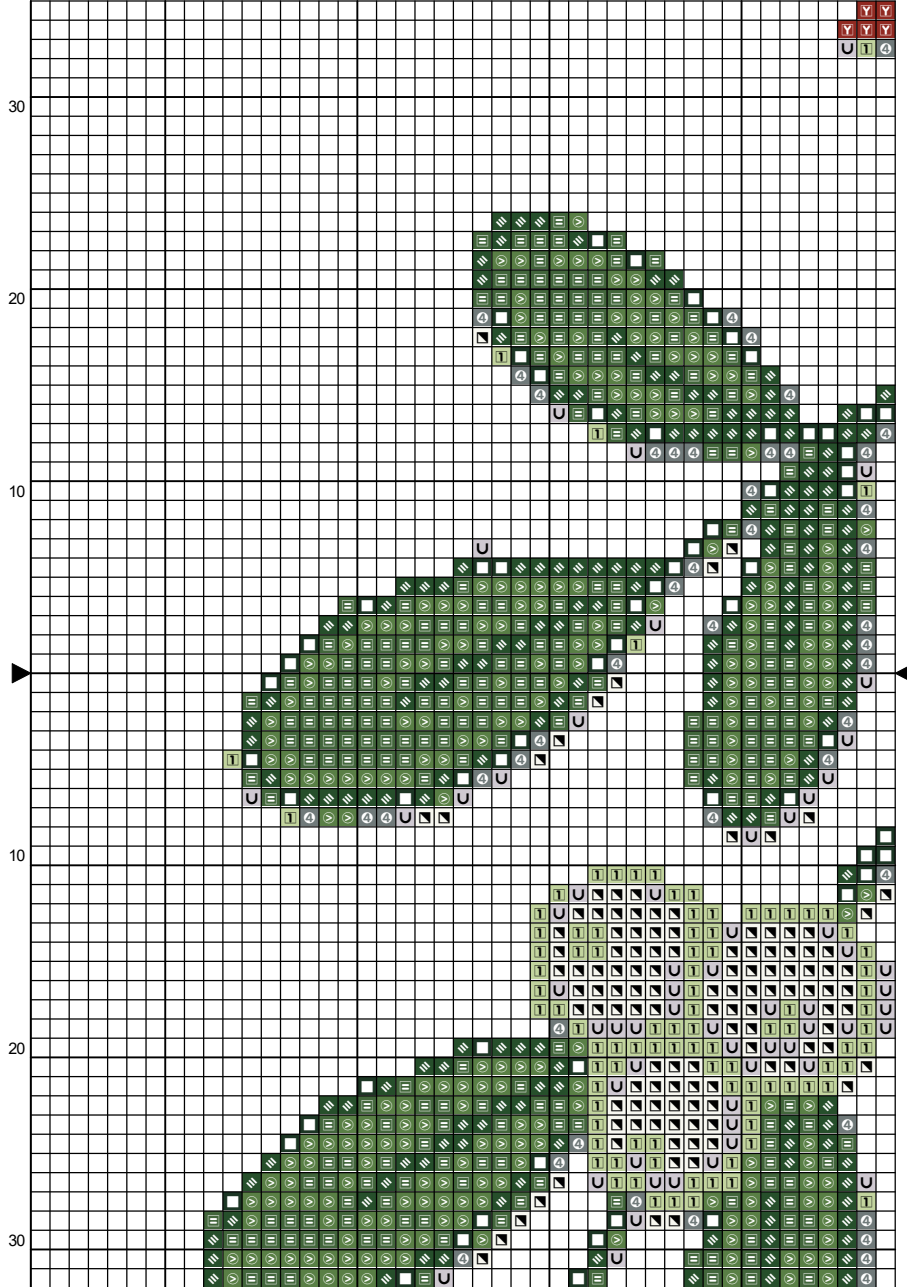
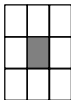
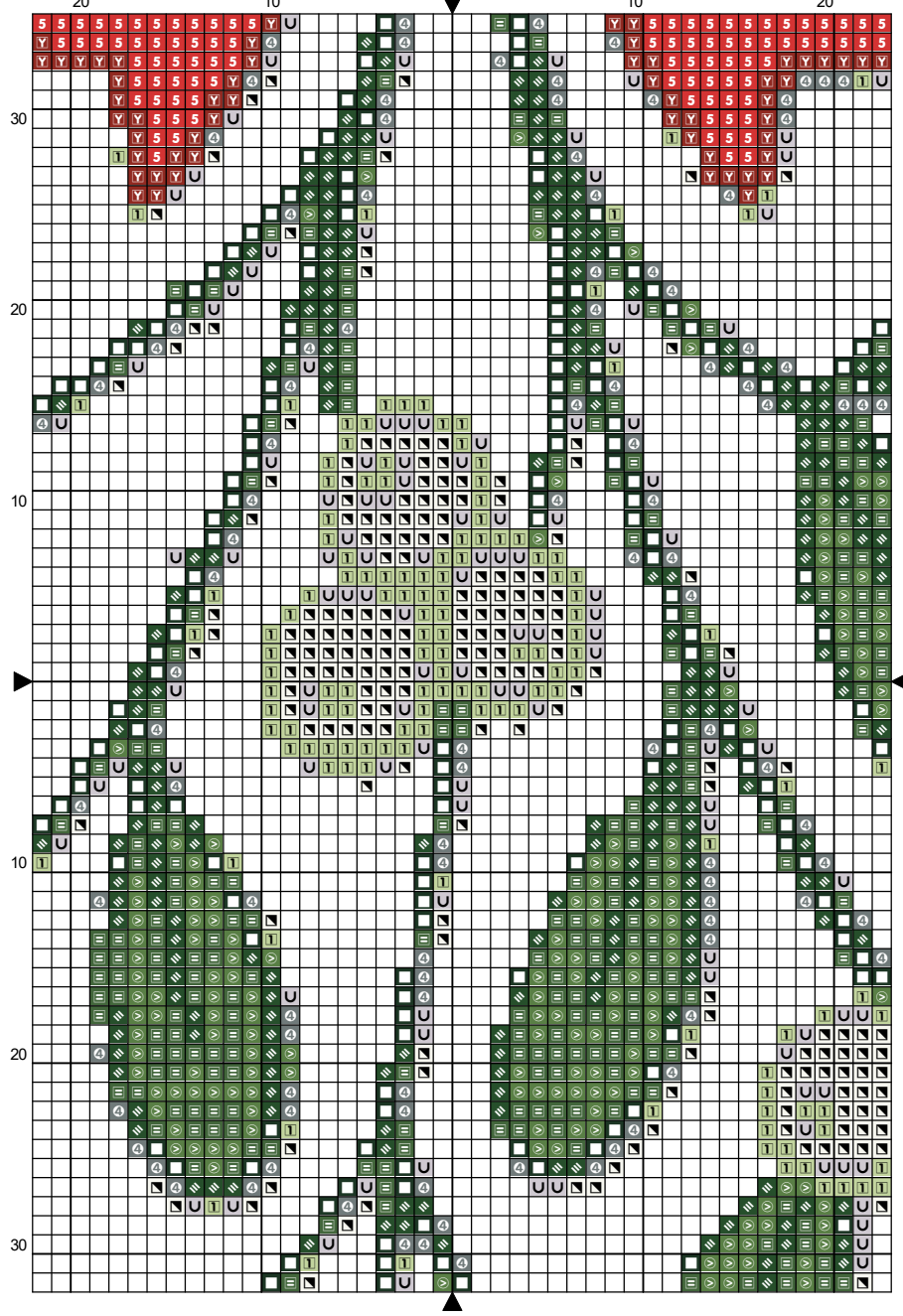


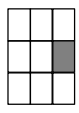
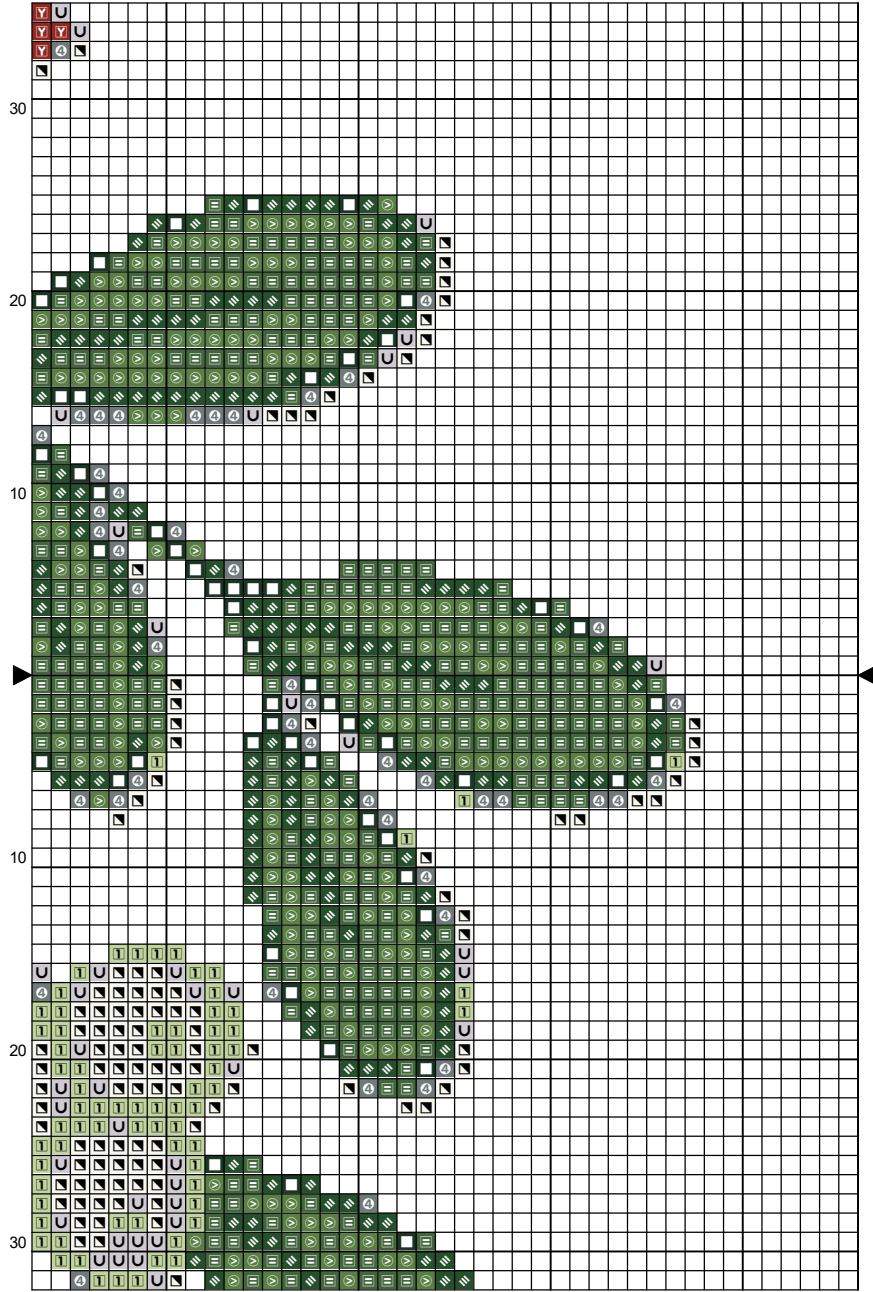


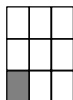
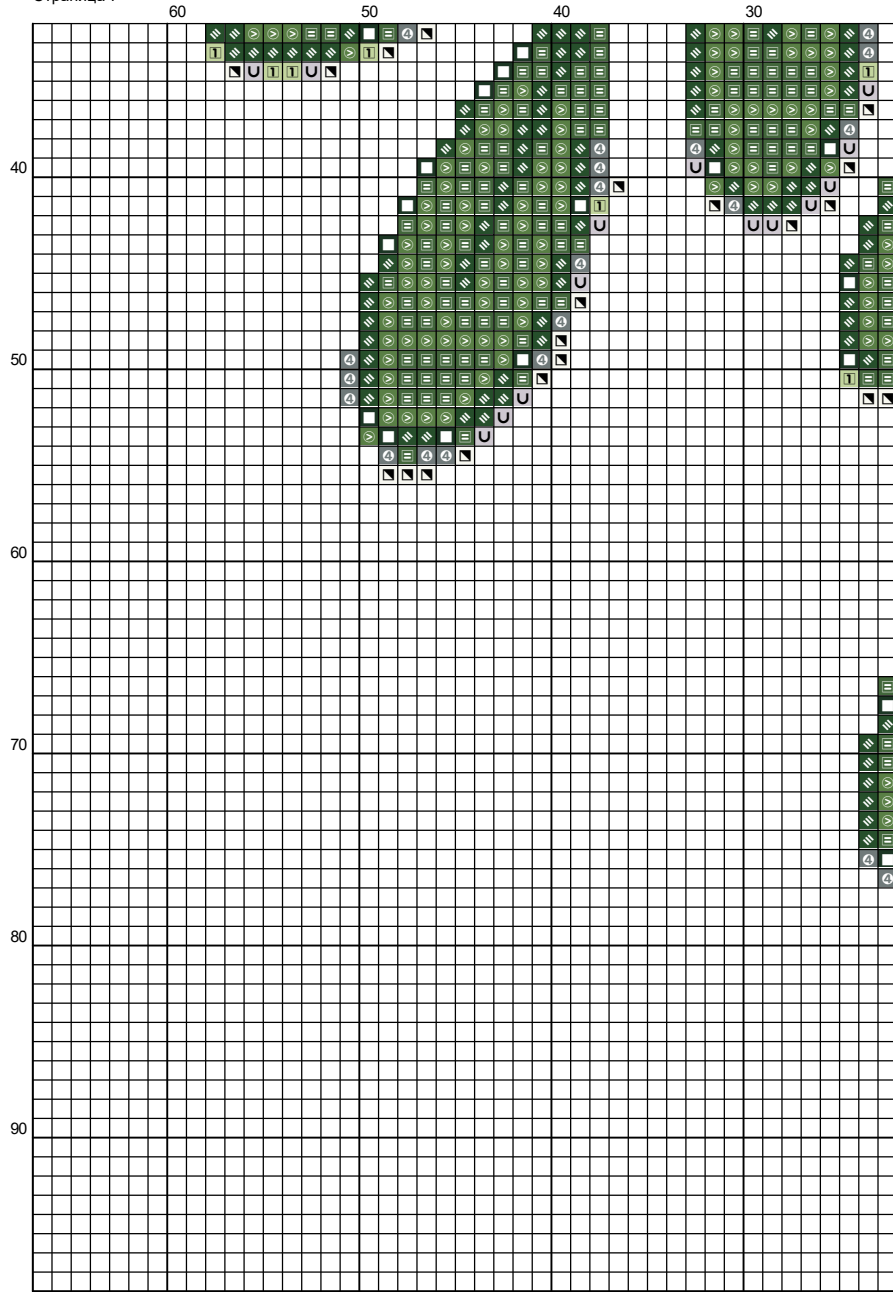
Design size: 8.29 x 11.14 inches or 21.05 x 28.30 cm

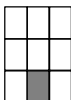
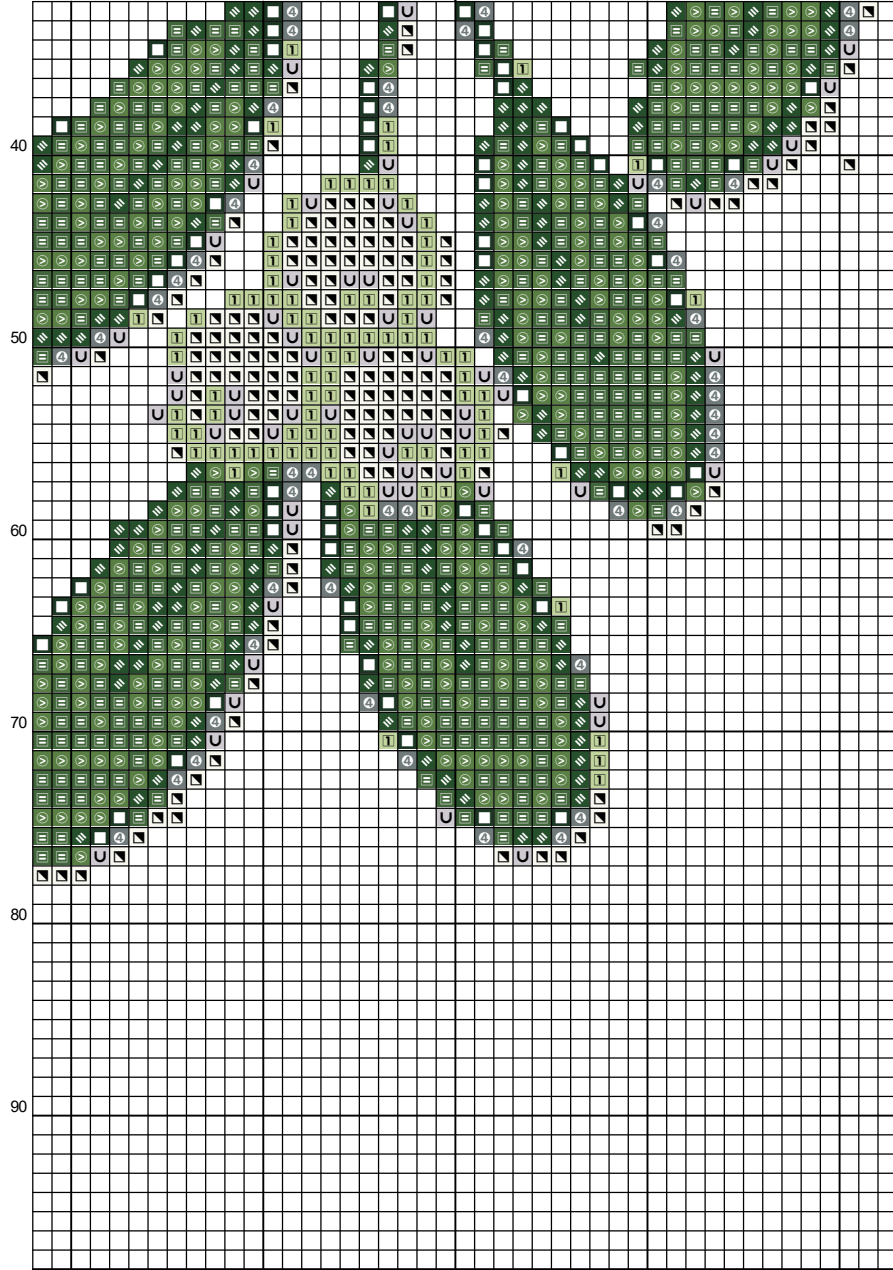


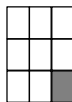
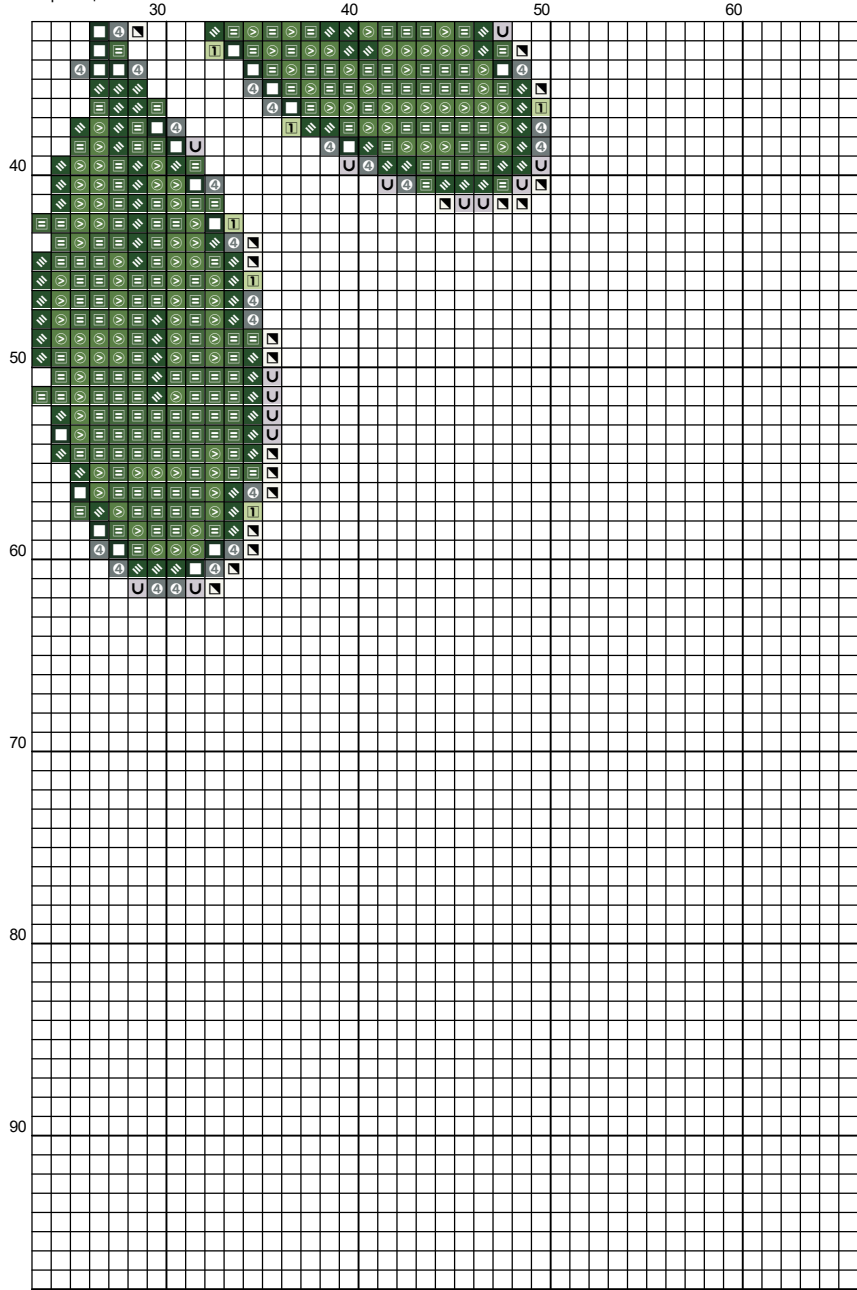



















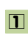


Instructions and Symbol Key

Fabric: 14 count Aida

Stitches: 116 x 156 **Size:** 8.29 x 11.14 inches or 21.05 x 28.30 cm

Colours: DMC

Use 2 strands of thread for cross stitch

<u>Sym</u>	<u>No.</u>	<u>ColourName</u>	<u>Sym</u>	<u>No.</u>	<u>ColourName</u>
	890	Deep forest green		986	Dark forest green
	987	Basil green		919	Red copper
	988	Forest green		169	Pewter grey
	350	Red vermillion		369	Bamboo leaf green
	27	White Violet		3865	Winter white

This chart has been designed and printed with our best intentions of being without mistakes. However, the possibility of human error, printing mistakes or the variation of individual stitching does exist, and we regret that we cannot be responsible for this.

Produced using Cross Stitch Professional for Windows www.dpsoftware.co.uk

Длины нитей

Нить (DMC)	Описание	Стежки	Бэкстичи	Длина (м)	Бэкстичи	Всего
890	Deep forest green	423	0	2.1	0.0	2.1
986	Dark forest green	933	0	4.7	0.0	4.7
987	Basil green	1389	0	7.0	0.0	7.0
919	Red copper	575	0	2.9	0.0	2.9
988	Forest green	1028	0	5.2	0.0	5.2
169	Pewter grey	342	0	1.7	0.0	1.7
350	Red vermillion	1111	0	5.6	0.0	5.6
369	Bamboo leaf green	430	0	2.2	0.0	2.2
27	White Violet	335	0	1.7	0.0	1.7
3865	Winter white	639	0	3.2	0.0	3.2